



KNIGHT PEDESTRIAN

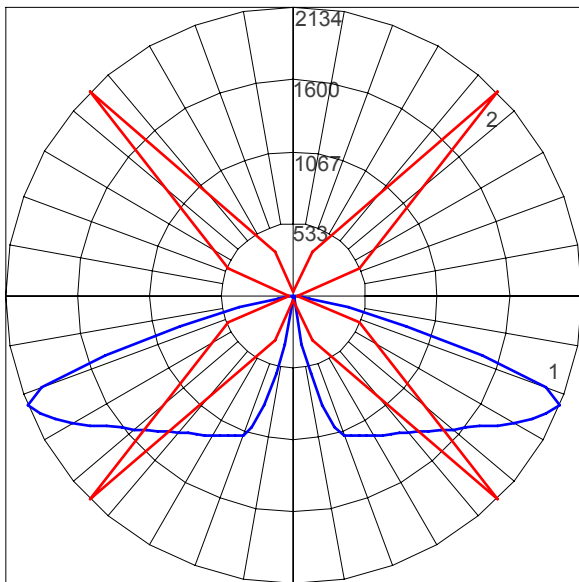
LIGHTING PLOTS

LAMP DESCRIPTIONS

LAMP	DRIVER	COLOR TEMPERATURE	LUMINAIRE LUMENS*	B.U.G. RATING
Lumiled® LED	60W	3000	4356	B2-U2-G1
Lumiled® LED	60W	4000	4356	B2-U2-G1

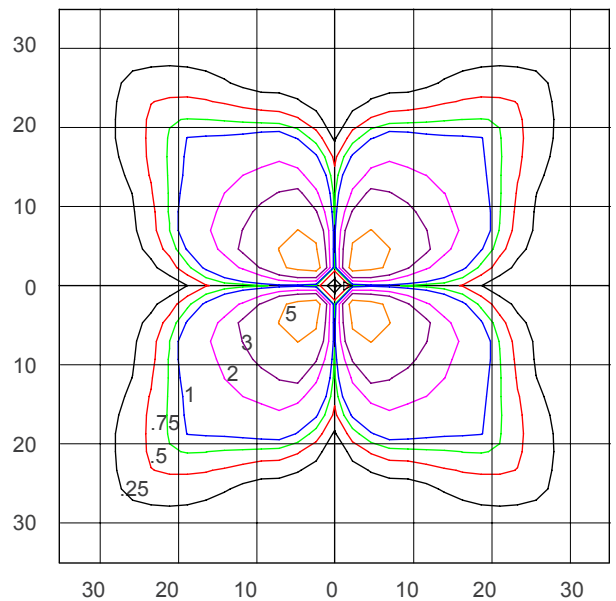
*Luminaire lumens represents the absolute photometry for the luminaire, and indicates the lumens out of the entire fixture

POLAR CANDELA PLOT (60W LED, 3000K/4000K)



Maximum Candela = 2133; Located at Horizontal Angle = 45; Vertical Angle = 67.5
 #1 - Vertical Plane Through Horizontal Angles (45 - 225) (Through Max. Cd.)
 #2 - Horizontal Cone Through Vertical Angle (67.5) (Through Max Cd.)

ISOFOOTCANDLE PLOT (60W LED, 3000K/4000K)



Isofootcandle Plot shows light distribution pattern at ground level with 60W LED light engine. Readings have been taken assuming the photometric center of the luminaire to be 11.15 feet above ground level. IES files for standard lamps are available on our website.